



# 2889 N Commerce Pkwy

former Spirit Airlines IT HDQ space

±26,287 SF Office space  
Available Summer 2024

Equidistant from Ft. Lauderdale and Miami, Miramar Park of Commerce is a light industrial park campus in Southwest Broward County fronting the Florida Turnpike just one mile east of the Red Road Interchange.

Since breaking ground in 1984, Sunbeam has developed the Miramar Park of Commerce into South Florida's largest locally-owned and managed Business Park, with over five million square feet of office/service, laboratory, pharmacy, light manufacturing and distribution space.

The world class park is home to 10,000 employees from more than 170 national and international companies. New flex/office space, corporate build-to-suits as well as a limited number of second-generation spaces are available in the park.



**Jonathan Kingsley**  
Vice Chairman  
+1 954 652 4610

[jonathan.kingsley@colliers.com](mailto:jonathan.kingsley@colliers.com)

**Jarred Goodstein**  
Senior Vice President  
+1 954 652 4617

[jarred.goodstein@colliers.com](mailto:jarred.goodstein@colliers.com)

Copyright © 2023 Colliers International. Information herein has been obtained from sources deemed reliable, however its accuracy cannot be guaranteed. The user is required to conduct their own due diligence and verification.

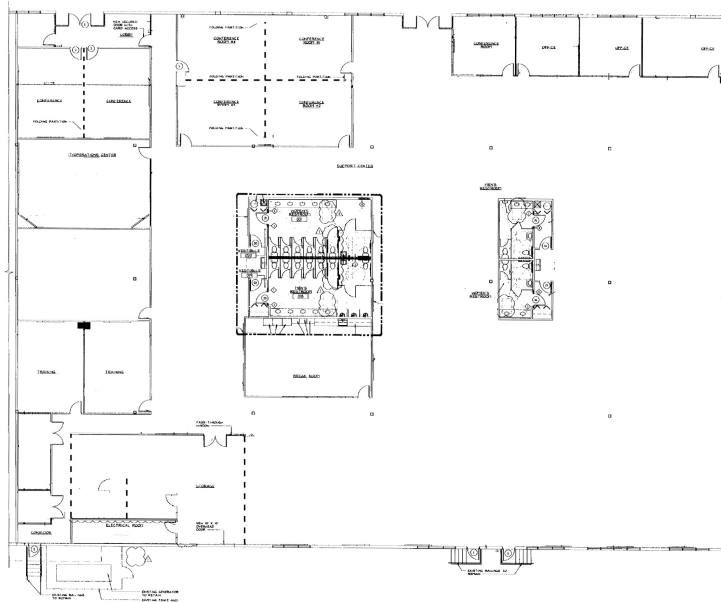


# 2889 N Commerce Pkwy

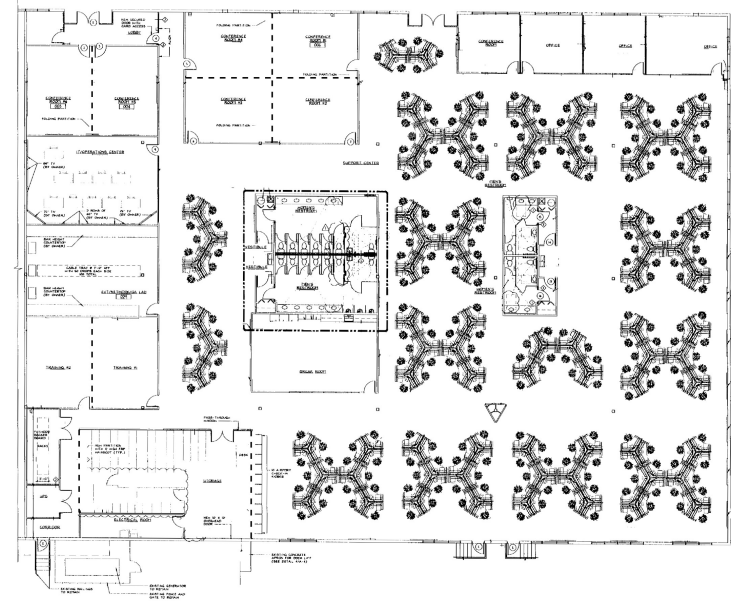
former Spirit Airlines IT HDQ space

- ±26,287 SF
- 24' ceiling height
- Dock high
- Parking 4.8/1,000
- Palm Avenue frontage
- \$17.00/SF NNN
- Available 7/1/24

±26,287 SF Office space  
Available Summer 2024



Unfurnished



Furnished



**Jonathan Kingsley**  
Vice Chairman

+1 954 652 4610

[jonathan.kingsley@colliers.com](mailto:jonathan.kingsley@colliers.com)

**Jarred Goodstein**  
Senior Vice President

+1 954 652 4617

[jarred.goodstein@colliers.com](mailto:jarred.goodstein@colliers.com)

Copyright © 2023 Colliers International. Information herein has been obtained from sources deemed reliable, however its accuracy cannot be guaranteed. The user is required to conduct their own due diligence and verification.